

Schedule of Wholesale Charges

1 April 2024 to 31 March 2025



BRISTOL
WATER

It's what we're made of.

Contents

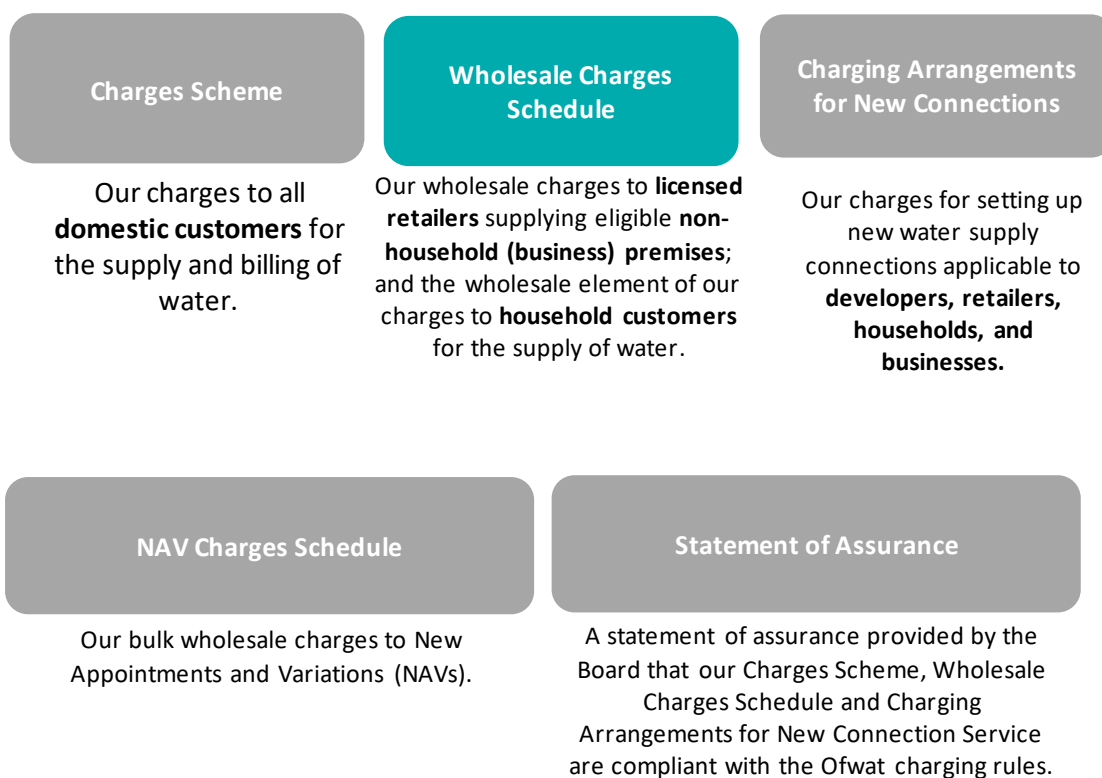
1	Introduction	3
2	General Information	3
3	Unmeasured Water – Household Customers	6
4	Measured Water - Household Customers	7
5	Measured Water - Non-Household Customers	8
6	Unmeasured Water – Non-Household Customers	9
7	Special Agreement Tariffs	10
8	Non-Potable Supplies	11
9	Methods of Charging	12
10	Switching to Measured Charges	14
11	Non- Primary Services and Charges for Retailers	15
12	Contact Details.....	21
	Appendix One – Bristol Water Area of Supply	22
	Appendix Two - RWG Tariff Simplification Summary	23

Version Control – Summary of Changes:

V2 – 21.03.2024	Measured Water – Non-Household Customers	8
	Non-Potable Supplies	11
	Non-Potable Supplies	28

1 Introduction

Annual Charges Publications



On the 1 February 2023 Ofwat terminated the Licence of Bristol Water and varied the Licence of South West Water to cover the area served by Bristol Water, following the acquisition of Bristol Water plc by Pennon. The revised Licence of South West Water provides for separate price controls (and therefore charges) for the Bristol Water area.

2 General Information

- 2.1 Ofwat’s PR19 Final Determination and the subsequent redetermination by the Competition and Markets Authority set separate controls for wholesale and household retail activities. The charges presented in this schedule represent tariffs for **wholesale** activities only. The wholesale revenue control includes revenues for all wholesale activities to both households and non-households, as well as developer services activities. Combined wholesale and retail tariffs for customers not eligible for business retail competition

("household customers") are shown in the Bristol Water Charges Scheme document.

- 2.2 The wholesale charges stated in this document are payable by retailers, end user prices will be set by the retailer. Bristol Water exited the business retail market with effect from April 2017. Specific tariffs in this document cover charges to New Appointments & Variations (NAVs)
- 2.3 From 1 February 2023, the Bristol Water area is part of the appointed water company licence of South West Water Limited. Bristol Water has separate revenue controls from Ofwat, and this charges schedule considers the wholesale charges for the Bristol area of South West Water Limited. Bristol Water provides water to customers within the area of supply shown in Appendix One.
- 2.4 Bristol Water household customers are billed by Bristol Wessex Billing Services Ltd (BWBSL), a company jointly owned by Pennon and Wessex Water, which is also responsible for billing Wessex Water customers for water and sewerage services.
- 2.5 All non-household customers are able to choose their retail service provider. Details of retailers currently operating in the non-household market can be found at <https://www.open-water.org.uk/for-customers/find-a-retailer/> .
- 2.6 All wholesale charges will be subject to VAT where appropriate and are stated net of VAT in this document.
- 2.7 Payment terms are set out in Schedule 3 of your Wholesale agreement for Wholesale services. All charges are payable in accordance with our agreement with you, where applicable. Failure to pay on time will result in recovery action and you may need to pay additional costs because of this.
- 2.8 Bristol Water offers Retailers two forms of payment, in line with the standard market code terms;
 - Post Payment which requires credit terms such as a 3rd party guarantee, a letter of credit, a Surety Bond or Cash
 - Pre-payment

Retailers who opt to post-pay their NHH charges have to post collateral with us. The collateral represents 50 days supply. We also provide Alternative Credit support allowance for post payment Retailers. Retailers whose collateral requirement is less than £10,000 no longer need to provide us with any collateral, subject to the retailer being able to demonstrate a good payment history with us. The terms, and the agreements with individual retailers who choose this option, are available on our website. We will also discuss alternative credit arrangements with retailers where they ask us to do

so. We set out the principles for the range of alternative credit arrangements and four specific options on our website, alongside the terms of the agreements with individual retailers.

- 2.9 Reference to rateable value means the figure published in the rating valuation list as at 31 March 1990. Where no rateable value exists, the Valuation Office Assessment provided by the United Kingdom Valuation Office Agency will be used.
- 2.10 This document provides a comprehensive list of wholesale charges. Other charges, such as for developer services and standpipe hire are available in the other charges documents which are accessible through our website. <https://www.bristolwater.co.uk/business-developers/charges-regulations/>

3 Unmeasured Water – Household Customers

- 3.1 The charges listed in this section represent the wholesale element of the bill applicable to unmeasured household customers. Household customers are also subject to a retail charge. Details of the combined tariffs payable by customers are available in our Charges Scheme document, published on 1st February.
- 3.2 Standing Charge per annum: **£12.37**
- 3.3 Charge per £ of Rateable Value: **£1.4119**
- 3.4 Caravans - Caravans are charged the standing charge plus 75% of the standard RV charge. For 2024/25 the charge per pound of rateable value for caravans is: £1.0589.
- 3.5 Vacant Properties – Unfurnished unmeasured vacant properties are not charged.
- 3.6 If an unfurnished unmetered property is undergoing refurbishment or renovation, unmetered charges are legally payable. The customer may however switch to a metered charge, by having a water meter installed. Where there is evidence of low water usage during the works, we may agree to charge only 50% of the unmetered charges due, on a pro rate basis for the period of refurbishment or renovation. The customer or the person carrying out the works must notify the Company and request this reduction in the charges. If a property is being used for storage, it will be considered occupied with charges made against the owner of the premises.
- 3.7 If a property is unoccupied due to the customer being hospitalised or residing in care charges will not normally apply. The customer or their representative should contact their retailer at the earliest possible opportunity to inform them of this situation.
- 3.8 Following the death of the sole occupier of a property, charges will not normally apply (from the date of death). The deceased's executors should contact their retailer at the earliest possible opportunity to inform them of these circumstances.
- 3.9 Sprinkler Charges - An unmeasured customer using a sprinkler or other automatic garden-watering device will be charged an annual fee of £50. The Company reserves the right to selectively meter customers using sprinklers or other automatic garden-watering devices.

4 Measured Water - Household Customers

- 4.1 The charges listed in this section represent the wholesale element of the bill applicable to unmeasured household customers. Household customers are also subject to a retail charge. Details of the combined tariffs payable by customers are available in our Charges Scheme document, published on 1st February.
- 4.2 Standing Charge per annum: **£14.14**
- 4.3 Volumetric Charge per cubic metre of water: **£1.5887**
- 4.4 Assessed Charges – Where it is not possible to fit a meter and the customer does not wish to remain on Rateable Value charging, an assessed charge will be levied. This will consist of the Standing Charge as set out in para 4.2 above plus a charge per bedroom of:
- First Bedroom: £87.88
 - Each Additional Bedroom: £59.69
- 4.5 Customers in sheltered accommodation may be eligible for a discounted level of assessed charge – see page 13 for details.
- 4.6 Where an assessed charge property is occupied by one person we will not charge for additional bedrooms. Customers must contact BWBSL to inform us of their eligibility for this discount. Proof of single-occupancy may be required.
- 4.7 Leakage allowances may be given, according to the terms set out in the latest version of our leakage allowance leaflet.
- 4.8 Vacant Properties – Measured vacant properties are not charged, however meter readings will still be taken and if any consumption is recorded normal charges will apply.
- 4.9 Premises that are undergoing refurbishment or being used for storage will be considered occupied, with charges made to the owners of the premises.
- 4.10 If a property is unoccupied due to the customer being hospitalised or residing in care charges will not normally apply. The customer or their representative should contact their retailer at the earliest possible opportunity to inform them of this situation.
- 4.11 Following the death of the sole occupier of a property, charges will not normally apply (from the date of death). The deceased's executors should contact their retailer at the earliest possible opportunity to inform them of these circumstances.

5 Measured Water - Non-Household Customers

- 5.1 These charges are for the wholesale services provided by Bristol Water. Charges for retail services provided by retailers will be added to the tariffs payable by customers. Details of these tariffs are available from your Retailer.
- 5.2 Non-Domestic charges are grouped into bands based on annual consumption. These tariffs are detailed in the table below.

Band	Forecast annual use in cubic metres	Fixed annual charges £	Volume charges (£ per cubic metre)
A	to 500,000	28,017.18	1.1552
B	to 250,000	11,147.61	1.2281
C	to 100,000	4,785.81	1.2979
D	to 50,000	2,167.43	1.3665
E	to 15,000	44.82	1.5421
F	to 5,000	13.02	1.5643
G2 G	to 1,000	6.01	1.5847
G G2	to 500	6.01	1.5847

- 5.3 Assessed Charges – Where water is not used by the customer in a production process a banded charge will be levied. Bands will consist of up to 5 employees. The first band is charged at £68.34, with an incremental charge of £49.14 for each subsequent band. In addition, a standing charge of £6.01 will be made.
- 5.4 Where water is used by the customer as part of a production process, we will undertake a site survey during which evidence of process consumption must be provided by the applicant. We will then make an individual assessment.
- 5.5 Leakage allowances may be given, according to the terms set out in the latest version of our leakage allowance policy.
- 5.6 Vacant properties – Normal charges apply to vacant measured agricultural properties. We do not charge for other vacant measured non-household properties. A vacant property is one where the previous occupant has notified us or via their retailer to this fact, and the property remains unoccupied by the previous occupant and no new occupier is in place.
- 5.7 Where meter readings record consumption, then normal charges will apply where an occupier of the premises is identified. These meter readings will have been recorded by the relevant retailer through the MOSL central settlement system, and in the case where there is no occupant the retailer should reflect this through the normal market processes.

6 Unmeasured Water – Non-Household Customers

- 6.1 These charges are for the wholesale services provided by Bristol Water. Charges for retail services provided by retailers will be added to the tariffs payable by customers. Details of these tariffs are available from your retailer.
- 6.2 Standing Charge per annum: **£12.37**
- 6.3 Charge per £ of Rateable Value: **£1.4101**
- 6.4 Trough Charges – Field troughs unless metered, fixed standpipes and similar devices will be charged at: £396.99 per annum.
- 6.5 Vacant Properties – Unfurnished unmeasured vacant properties are not charged.
- 6.6 If an unfurnished unmetered property is undergoing refurbishment or renovation, unmetered charges are legally payable. The customer may however switch to a metered charge, by having a water meter installed. Where there is evidence of low water usage during the works, we may agree to charge only 50% of the unmetered charges due, on a pro rate basis for the period of refurbishment or renovation. The customer or the person carrying out the works must notify the retailer and request this reduction in the charges. If a property is being used for storage, it will be considered occupied with charges made against the owner of the premises.

7 Special Agreement Tariffs

- 7.1 Bristol Water is currently engaged in special agreements with a small number of customers, where discounted water supplies are provided, normally in exchange for historic access arrangements.
- 7.2 Each agreement is subject to separate terms and conditions relating to the end user tariff, but for the purpose of wholesale charges we have simplified these into six special agreement tariffs.
- 7.3 Each tariff may comprise some or all of:
- a fixed charge per customer per year,
 - a volumetric charge per cubic meter,
 - an allowance of water for which no charge is made; or
 - an allowance of water to be charged at a discounted rate
- 7.4 Our wholesale special agreement charges for 2024/25 are:

Special Agreement Tariff Short Code	Fixed Annual Charge 2024-25 (£)	Volume Charge 2024-25 (£/m ³)	First Block Charge (£/m ³)	First Block Volume (m ³)
SA1	0.00	1.4856	0.0251	273
SA2	0.00	0.9174	n/a	n/a
SA3	0.00	0.00	n/a	n/a
SA4	3,087.50	0.00	n/a	n/a
SA5	13.59	1.5643	n/a	2,200
SA6	6.26	0.8716	n/a	700

- 7.5 We also have a small number of customers who receive free supplies of potable or non-potable water. These are designated as Band Z.

8 Non-Potable Supplies

- 8.1 Where a customer's circumstances do not require water to be treated to normal standards, we may be able to offer a non-potable supply, if this is technically possible.
- 8.2 Any application for a non-potable supply should be made to Bristol Water to assess the technical feasibility.
- 8.3 Non-potable supplies are charged at the following rates. Customers anticipating using more than 50,000m³ should contact the Company for a specific tariff based on the site.

Band	Forecast annual use in cubic metres	Fixed annual charges £	Volume charges (£ per cubic metre)
A	to 500,000	on application	on application
B	to 250,000	on application	on application
C	to 100,000	on application	on application
D	to 50,000	2,167.43	1.2572
E	to 15,000	44.82	1.4187
F	to 5,000	13.02	1.4392
G2 G	to 1,000	6.01	1.4579
G G2	to 500	6.01	1.4579

9 Methods of Charging

9.1 Household Unmeasured Charges

- a) Customers on unmeasured charges are charged a standing charge, and a variable charge calculated by the Rateable Value (RV) of their property. Unmeasured customers may choose to switch to Measured Charges.
- b) Notional Rateable Value - Where unmeasured properties have been structurally altered then we will use a 'notional rateable value' that is based on comparable households or similar properties of the same type. These may be used on a temporary basis or as a permanent charge depending on circumstances. This may also apply where the property has been substantially altered so that the loading units have increased by 25%. (A standard property has a loading unit of 24 through such items as taps and other water fittings). These charges are detailed in the table below:

Property Type	No. of Bedrooms	Notional RV £	Property Type	No. of Bedrooms	Notional RV £
Bedsit	1	80	Semi detached	1	230
Flat/ Maisonette	1	110		2	260
	2	140		3	290
	3	170		4*	320
	4*	200	Detached	1	290
Terrace	1	170		2	320
	2	200		3	350
	3	230		4*	380
	4*	260			
Temporary caravan charge		95			

*note: Add £30 Notional RV for each additional bedroom.

- c) Where none of these applies, a fixed annual fee of £288.49 will be used.

9.3 Household Measured Charges

- a) Customers on measured charges are charged a standing charge, and a variable charge based on their water consumption, which is measured by a water meter fitted by Bristol Water.
- b) Retailers are responsible for reading customer meters.
- c) If a customer believes that the consumption recorded on their bill is incorrect, they may contact their retailer who will investigate. A guide to the normal consumption of a household can be found on the Bristol Water website

www.bristolwater.co.uk and in the “Now you’ve turned on to water metering” leaflet provided to new measured customers.

- d) The retailer may request that the meter is tested to check its accuracy. The cost of this to the retailer is £83, plus VAT. If the meter is found to have been recording inaccurately the cost of the meter testing will not be payable.

9.4 Household Assessed Charges

- a) Where a household customer has requested to be charged on a measured basis, but it is not possible to install a water meter at their property, the customer may be offered an assessed charge, based on the number of bedrooms in their property.
- b) Where customers live in sheltered accommodation with communal laundry facilities, we may discount the bedroom-related portion of the assessed charge by 15%. Please contact Pelican for more details of this discount.

10 Switching to Measured Charges

- 10.1 Household customers who are charged on an unmeasured basis have the option to switch to a measured charge, by having a water meter installed. The cost of the meter installation is normally free to domestic customers.
- 10.2 Bristol Water operates a change of occupier metering policy, whereby the Company may install a meter at a customer's property. When there is a change of occupier at that property, measured charges may commence.
- 10.3 Household customers who wish to switch to a measured charge should contact Pelican.
- 10.4 Non-Household customers who wish to switch to a measured charge should contact their retailer. Non-Household customers should also contact their retailer if they wish to consider an assessed charge as an alternative to the unmeasured RV basis of charging. The assessed charge options where we do not fit a meter are set out in section 5.

11 Non- Primary Services and Charges for Retailers

- 11.1 Our non-primary charges for services we provide to Retailers are set out in this section.
- 11.2 If the work related to the non-primary services is completed outside of the agreed code service level, unless this is outside of our control, then any non-primary charge will not be passed on to the Retailer.
- 11.3 Verification or confirmation of a supply route - At a retailer's request we will carry out supply route, leakage and/or high consumption checks. For a meter confirmation or supply route check where our data is found to be incorrect then no charge will apply to the Retailer.

Product/Service – Verification/SRC	Charge Basis	Wholesale Charge
Single person site visit during Standard Hours (services and/or meter details are as specified)	Fixed Price	£85
Single person site visit outside Standard Hours (services and/or meter details are as specified)	Fixed Price	£113
Additional resource (irrespective of time) when services and/or meter details are as specified	Fixed Price	£85

- 11.4 Water Regulations Breach/Inspections - following a Water Regulations Breach or Inspection, we will carry out follow up visits. We encourage the Retailer to contact and support their customer during this process. If the work to rectify the breach or infringements has not been successfully started or completed, then an abortive charge will apply (up to a maximum of 3).

- 11.5 At a retailer's request we will also provide Water Regulations advice/Information to either the Retailer or their Customer.

Product/Service – Water Regulations	Charge Basis	Wholesale Charge
Bristol Water's Water Regulation aborted visit	Fixed Price	£89
Repeat Inspection during Standard Hours	Fixed Price	£89
Repeat Inspection outside Standard Hours	Fixed Price	£120
Additional resource (irrespective of time)	Fixed Price	£89
Advice/Information on Water Regulations	Fixed Price	£89

- 11.6 Temporary Disconnections of a Supply - At a retailer's request we will carry out a temporary disconnection to their customer's supply.

Product/Service – Temporary Disconnection	Charge Basis	Wholesale Charge
Standard disconnection during Standard Hours where no pipework modifications or excavation is required	Fixed Price	£99

Product/Service – Temporary Disconnection	Charge Basis	Wholesale Charge
Standard disconnection outside Standard Hours where no pipework modifications or excavation is required (non-payment)	Fixed Price	£150
Standard disconnection outside Standard Hours where no pipework modifications or excavation is required (water regs breach/illegal use)	Fixed Price	£160
Non-standard disconnection where excavation or pipework modifications are required (water regulations breach/illegal use)	Quotation	Quote
Standard disconnection during Standard Hours where no pipework modifications or excavation is required (retailer request)	Fixed Price	£95
Standard disconnection outside Standard Hours where no pipework modifications or excavation is required (retailer request)	Fixed Price	£125
Non-standard disconnection where excavation or pipework modifications are required (retailer request)	Quotation	Quote

11.7 Permanent Disconnection of a Supply for non-payment - At a retailer's request we will carry out a permanent disconnection to their customer's supply. Where the permanent disconnection is for non-payment, we may request that the retailer or their representative will also be on-site during this work.

Product/Service – Permanent Disconnection	Charge Basis	Wholesale Charge
Survey during Standard Hours	Fixed Price	£85
Survey outside Standard Hours	Fixed Price	£113
Survey requiring additional resources	Fixed Price	£85
Permanent disconnection	Quotation	Quote

11.8 Permanent Disconnect of a Supply following a customer's request to their Retailer – At the customer's request via their retailer, we will carry out a survey and a permanent disconnection of the supply.

Product/Service – Permanent Disconnection	Charge Basis	Wholesale Charge
Survey charge will only be applied if the disconnection is cancelled at customers request	Fixed Price	£85
Permanent disconnection (Customer Request)	Fixed Price	£0

11.9 Reconnection of a Supply at a retailer's request following a temporary disconnection only.

Product/Service - Reconnection	Charge Basis	Wholesale Charge
Standard reconnection during Standard Hours where no pipework modifications or excavation is required	Fixed Price	£85
Standard reconnection outside Standard Hours where no pipework modifications or excavation is required	Fixed Price	£113
Non-standard reconnection where excavation or pipework modifications are required	Quotation	Quote
Reconnection following an Accredited Entity Disconnection	Fixed Price	£113

11.10 Metering

At a retailer request we will carry out the following metering activities, where the meter belongs to Bristol Water.

Product/Service - Metering	Charge Basis	Wholesale Charge
Survey during Standard Hours	Fixed Price	£83
Survey outside Standard Hours	Fixed Price	£113
Survey requiring additional resource	Fixed Price	£83
Exchanging a meter standard in existing chamber with minimal pipework modification (concentric in stop tap box)	Fixed Price	£107
Exchanging a meter - non-standard, where excavation or pipework and/or chamber modifications are required	Quotation	Quote
Exchanging a meter standard in existing chamber with minimal pipework modification (Inline up to 25mm)	Fixed Price	£238
Exchanging a meter standard in existing chamber with minimal pipework modification (Inline up to 40mm)	Fixed Price	£536
Exchanging a meter standard in existing chamber with minimal pipework modification (RF concentric in stoptap box)	Fixed Price	£179
Install a meter standard in existing chamber with minimal pipework modification (concentric in stoptap box)	Fixed Price	£179
Meter option installation	Quotation	Quote
Meter option installation	Fixed Price	£95
Survey during Standard Hours		
Meter option installation	Fixed Price	£119
Survey outside Standard Hours		
Meter Accuracy Test 15mm to 20mm Concentric meter, where the meter is found to be recording within the limits set out in the Measuring Equipment (Cold Water Meter) Regulations 1988	Fixed Price	£209

Product/Service - Metering	Charge Basis	Wholesale Charge
Meter Accuracy Test in-line Meters, where the meter is found to be recording within the limits set out in the Measuring Equipment (Cold Water Meter) Regulations 1988	Quotation	Quote

Bristol Water recognises the WIRSAE Scheme and has an AE Contribution scheme set out below. This contribution relates to work undertaken under the following Non-Household Market Process only – B6: Repair or replacement of a faulty Meter performed by an Accredited Entity.

Bristol Water would therefore like to encourage Retailers to use WIRSAE Accredited Entities (AE) to reduce costs and improve market efficiency.

Bristol Water make our 15mm and 20mm concentric meter stock available to the AE as part of this contribution. These meters are held at our Barrow Logistics Centre. For further information please contact Bristol Water Wholesale Services so an AE can be set out within our systems.

Product/Service – AE Contribution	Charge Basis	Contribution to Retailer
Exchanging a meter standard in existing chamber with minimal pipework modification (concentric in stop tap box up to 20mm in size)	Fixed Price	£30 plus Meter
Exchanging a meter standard in existing chamber with minimal pipework modification (concentric in stop tap box up to 20mm in size) – Where Bristol Water has failed to meet the Market Level of Service and agreed with the Retailer in advance	Fixed Price	£48 plus Meter

11.11 Water Quality Advice – on request we will provide water quality advice, for a fixed price of £80. Information on water quality in your area can be obtained via our website at <https://www.bristolwater.co.uk/home/account-and-services/water-quality-checker>.

11.12 Accredited Entity Assistance – if we are requested by the retailer, we will assist an accredited entity in carrying out their work. Please refer to our website for the WIRSAE scopes recognised by Bristol Water and our Addendum.

Product/Service – AE Assistance	Charge Basis	Wholesale Charge
Visit during Standard Hours	Fixed Price	£85
Visit outside Standard Hours	Fixed Price	£113

11.13 Leakage repair follow up visit (following the issuing of a 14 day or 7 day leakage waste of water notice) – if we have been advised by the retailer that a private

leak has been repaired and our follow up visit shows the leak to still be running, then the abortive charge of £84 will apply (and for any further visits until the leak is repaired).

11.14 Abortive Visit or Missed Appointment - Where the retailer or their customer misses an appointment they have made with us, then a charge of £84 will apply.

11.15 Damage to Apparatus – Any damage to Bristol Water apparatus will be charged at cost. The cost recovered will be dependent on the equipment damaged and will be calculated as the total cost of the repair or replacement plus company overhead and margin.

11.16 Meter Reading – Bristol Water does not carry out any meter reading activities. Our household and non-market meters are presently read by Pelican Business Services. Should you wish to enquire about Pelican Business Services' meter reading services, please contact them directly on 0345 600 3600 or visit their website <https://www.pelican.co.uk/meter-reading-terms-and-conditions/>

11.17 No charge will be made by Bristol Water to provide data from our existing operational loggers where this is accessible and available. Please refer to our Data logger policy in advance of any request.

11.18 We do not provide replacement of lead service pipes or the provision and maintenance of fire hydrant services to water supply licensees.

11.19 Charges to retailers to us are made under section 9 of Business Terms in the Market Code.

11.20 Gap Site Scheme:

Bristol Water has signed up via MOSL to the 'Water Services only gap site incentive scheme' from April 2021. This scheme offers a financial incentive to retailers in relation to gap sites that are identified by them. A gap site is an eligible NHH premise (occupied or not), as per Ofwat's guidance, that is presently not in the Central Market Operating System (CMOS) or our Domestic billing system.

Incentive Offered	All Sites		Entry charge of use payment	Erroneous Application Charge
	Initial Payment	Year one allowance cap		
Water Only	£75	£500	£0	£15

The qualifying Retailer applying for the incentive must already be entered into a “Wholesale Contract” with Bristol Water to apply under this scheme. The Retailer will claim the incentive from Bristol Water following the successful registration of the gap site into the NHH market.

The gap site scheme set out the eligibility criteria, the application processes, covers duplicate and erroneous applications, payment terms and the dispute process. NB this does not include new connections and gap sites registered in the last 12 months. MOSL’s Code Panel will provide Governance for the Scheme.

12 Contact Details

Bristol Water Wholesale Services (For Retailer enquiries and service requests):

Address: Bridgwater Road, Bristol, BS13 7AT
Tel: 0345 604 1495 (Retailer line only)
Website: www.bristolwater.co.uk/your-business/wholesale-information/
Email: wholesale.desk@bristolwater.co.uk

BWBSL (For billing enquiries for household customers):

Address: 1, Clevedon Walk, Nailsea, Bristol BS48 1WA
Tel: 0345 600 3600 (Monday – Friday, 8am to 6pm)
Website: www.bristolwater.co.uk/your-home/billing-and-payments/
Email: customer.services@bwbsl.co.uk

Bristol Water (For operational enquires):

Address: Bridgwater Road, Bristol, BS13 7AT
Tel: 0345 702 3797 (Emergency Service only between 6pm and 8am)
Website: www.bristolwater.co.uk
Email: customer.services@bristolwater.co.uk

Consumer Council for Water:

This independent committee aims to protect customers' interests and investigate customer complaints free of charge.

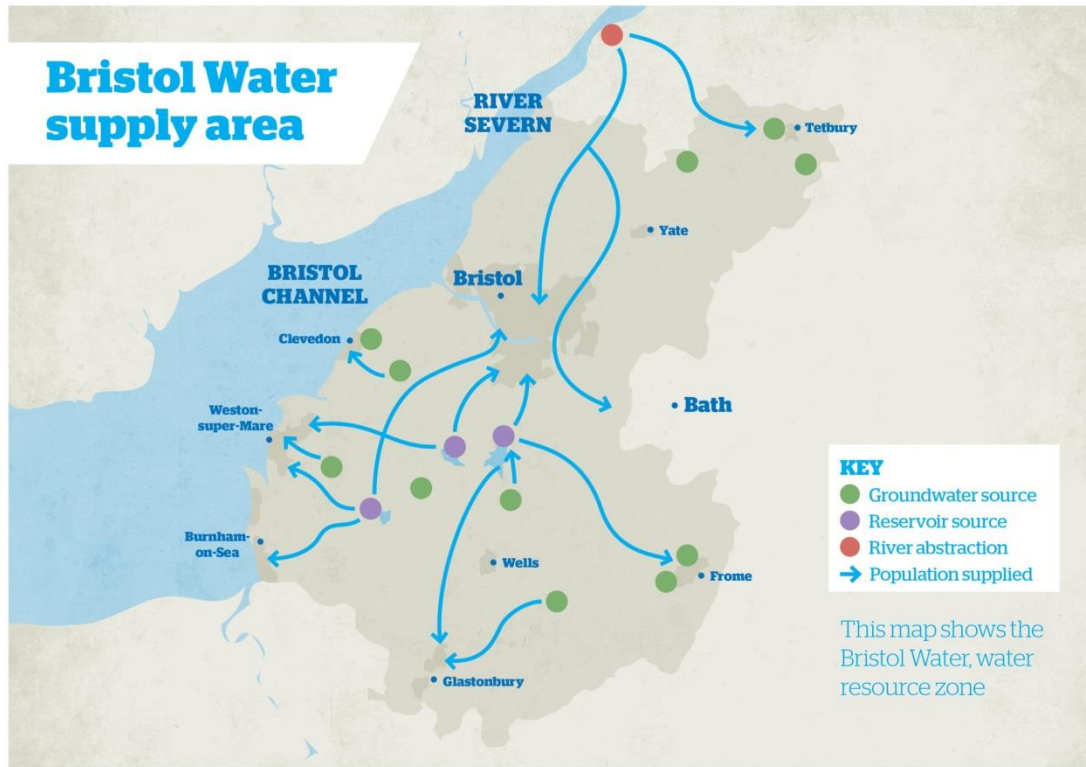
Address:
Consumer Council for Water, 23 Stephenson Street, Birmingham, B2 4BH

Tel: 0300 034 2222 (8.30-17.00 Mon-Fri)
Email: enquires@ccwater.org.uk
Website: www.ccwater.org.uk
Email: enquires@ccwater.org.uk

Water Services Regulation Authority (Ofwat)

Address: Centre City Tower, 7 Hill Street, Birmingham, B5 4UA
Tel: 0121 644 7500
Email: mailbox@ofwat.gov.uk
Website: www.ofwat.gov.uk

Appendix One – Bristol Water Area of Supply



Appendix Two - RWG Wholesale Tariff Simplification Sub-Group: Tariff Summary Table

BRISTOL WATER NHH HOUSEHOLD CHARGES

Measured Potable Water

Description	Unit	Charge	CMOS Tariff Code	CMOS Tariff Name	CMOS Charge Element	CMOS Charge Element Name
Metered Potable Water Services Band A	£/annum	28,017.18	MPBAN DA	Metered Potable Water Services Band A	D7102	Metered Potable Water Supply Point Fixed Charges
Metered Potable Water Services Band A	£/m3	1.1552	MPBAN DA	Metered Potable Water Services Band A	D7103	Metered Potable Water Block Tariff
Metered Potable Water Services Band B	£/annum	11,147.61	MPBAN DB	Metered Potable Water Services Band B	D7102	Metered Potable Water Supply Point Fixed Charges
Metered Potable Water Services Band B	£/m3	1.2281	MPBAN DB	Metered Potable Water Services Band B	D7103	Metered Potable Water Block Tariff
Metered Potable Water Services Band C	£/annum	4,785.81	MPBAN DC	Metered Potable Water Services Band C	D7102	Metered Potable Water Supply Point Fixed Charges
Metered Potable Water Services Band C	£/m3	1.2979	MPBAN DC	Metered Potable Water Services Band C	D7103	Metered Potable Water Block Tariff
Metered Potable Water Services Band D	£/annum	2,167.43	MPBAN DD	Metered Potable Water Services Band D	D7102	Metered Potable Water Supply Point Fixed Charges
Metered Potable Water Services Band D	£/m3	1.3665	MPBAN DD	Metered Potable Water Services Band D	D7103	Metered Potable Water Block Tariff
Metered Potable Water Services Band E	£/annum	44.82	MPBAN DE	Metered Potable Water Services Band E	D7102	Metered Potable Water Supply Point Fixed Charges
Metered Potable Water Services Band E	£/m3	1.5421	MPBAN DE	Metered Potable Water Services Band E	D7103	Metered Potable Water Block Tariff

Metered Potable Water Services Band F	£/ann um	13.02	MPBAN DF	Metered Potable Water Services Band F	D7102	Metered Potable Water Supply Point Fixed Charges
Metered Potable Water Services Band F	£/m3	1.5643	MPBAN DF	Metered Potable Water Services Band F	D7103	Metered Potable Water Block Tariff
Metered Potable Water Services Band G	£/ann um	6.01	MPBAN DG	Metered Potable Water Services Band G	D7102	Metered Potable Water Supply Point Fixed Charges
Metered Potable Water Services Band G	£/m3	1.5847	MPBAN DG	Metered Potable Water Services Band G	D7103	Metered Potable Water Block Tariff
Metered Potable Water Services Band G2	£/ann um	6.01	MPBAN DG2	Metered Potable Water Services Band G2	D7102	Metered Potable Water Supply Point Fixed Charges
Metered Potable Water Services Band G2	£/m3	1.5847	MPBAN DG2	Metered Potable Water Services Band G2	D7103	Metered Potable Water Block Tariff
Metered Potable Water Services Band Z	£/ann um	-	MPBAN DZ	Metered Potable Water Services Band Z	D7102	Metered Potable Water Supply Point Fixed Charges
Metered Potable Water Services Band Z	£/m3	-	MPBAN DZ	Metered Potable Water Services Band Z	D7103	Metered Potable Water Block Tariff
Special Agreement Band 1	£/ann um	-	SA1	Special Agreement Band 1	D7102	Metered Potable Water Supply Point Fixed Charges
Special Agreement Band 1	£/m3	1.4856	SA1	Special Agreement Band 1	D7103	Metered Potable Water Block Tariff
Special Agreement Band 1 First block	£/m3	0.0251	SA1	Special Agreement Band 1	D7103	Metered Potable Water Block Tariff
Special Agreement Band 2	£/ann um	-	SA2	Special Agreement Band 2	D7102	Metered Potable Water Supply Point Fixed Charges
Special Agreement Band 2	£/m3	0.9174	SA2	Special Agreement Band 2	D7103	Metered Potable Water Block Tariff
Special Agreement Band 3	£/ann um	-	SA3	Special Agreement Band 3	D7102	Metered Potable Water Supply Point Fixed Charges
Special Agreement Band 3	£/m3	-	SA3	Special Agreement Band 3	D7103	Metered Potable Water Block Tariff
Special Agreement Band 4	£/ann um	3,087.50	SA4	Special Agreement Band 4	D7102	Metered Potable Water Supply Point Fixed Charges
Special Agreement Band 4	£/m3	-	SA4	Special Agreement Band 4	D7103	Metered Potable Water Block Tariff

Special Agreement Band 5	£/ann um	13.59	SA5	Special Agreement Band 5	D7102	Metered Potable Water Supply Point Fixed Charges
Special Agreement Band 5	£/m3	1.5643	SA5	Special Agreement Band 5	D7103	Metered Potable Water Block Tariff
Special Agreement Band 5 First block	£/m3	-	SA5	Special Agreement Band 5	D7103	Metered Potable Water Block Tariff
Special Agreement Band 6	£/ann um	6.26	SA6	Special Agreement Band 6	D7102	Metered Potable Water Supply Point Fixed Charges
Special Agreement Band 6	£/m3	0.8716	SA6	Special Agreement Band 6	D7103	Metered Potable Water Block Tariff
Special Agreement Band 6 First block	£/m3	-	SA6	Special Agreement Band 6	D7103	Metered Potable Water Block Tariff

Unmeasured Water

Description	Unit	Charge	CMOS Tariff Code	CMOS Tariff Name	CMOS Charg e Elemen t	CMOS Charge Element Name
Assessed Services Band A	£/ann um	6.01	ATA	Assessed Services Band A	D7251	Unmeasured Water Fixed Charge
Assessed Services Band A	£/RV	-	ATA	Assessed Services Band A	D7252	Unmeasured Water RV Poundage
Assessed Services Band A	£/ann um	68.34	ATA	Assessed Services Band A	D7256	Unmeasured Water Miscellaneous Type A Charge
Assessed Services Band A	£/ann um	49.14	ATA	Assessed Services Band A	D7257	Unmeasured Water Miscellaneous Type B Charge
Assessed Services Band Z	£/ann um	-	ATZ	Assessed Services Band Z	D7251	Unmeasured Water Fixed Charge
Assessed Services Band Z	£/ann um	-	ATZ	Assessed Services Band Z	D7256	Unmeasured Water Miscellaneous Type A Charge
Assessed Services Band Z	£/ann um	-	ATZ	Assessed Services Band Z	D7257	Unmeasured Water Miscellaneous Type B Charge

Unmeasured Services Band A	£/ann um	12.37	UTA	Unmeasured Services Band A	D7251	Unmeasured Water Fixed Charge
Unmeasured Services Band A	£/RV	1.4101	UTA	Unmeasured Services Band A	D7252	Unmeasured Water RV Poundage
Unmeasured Services Band A	RV	-	UTA	Unmeasured Services Band A	D7253	Unmeasured Water RV Threshold
Unmeasured Services Band A	£/ann um	9,999.00	UTA	Unmeasured Services Band A	D7254	Unmeasured Water RV Maximum Charge
Unmeasured Services Band A	£/ann um	-	UTA	Unmeasured Services Band A	D7255	Unmeasured Water RV Minimum Charge
Unmeasured Services Band A	£/ann um	396.99	UTA	Unmeasured Services Band A	D7256	Unmeasured Water Miscellaneous Type A Charge
Unmeasured Services Band A	£/ann um	50.00	UTA	Unmeasured Services Band A	D7257	Unmeasured Water Miscellaneous Type B Charge
Unmeasured Services Band A	£/ann um	50.00	UTA	Unmeasured Services Band A	D7258	Unmeasured Water Miscellaneous Type C Charge
Unmeasured Services Band A	£/ann um	-	UTA	Unmeasured Services Band A	D7259	Unmeasured Water Miscellaneous Type D Charge
Unmeasured Services Band A	£/ann um	-	UTA	Unmeasured Services Band A	D7260	Unmeasured Water Miscellaneous Type E Charge
Unmeasured Services Band A	£/ann um	-	UTA	Unmeasured Services Band A	D7261	Unmeasured Water Miscellaneous Type F Charge
Unmeasured Services Band A	£/ann um	-	UTA	Unmeasured Services Band A	D7262	Unmeasured Water Miscellaneous Type G Charge
Unmeasured Services Band A	£/ann um	-	UTA	Unmeasured Services Band A	D7263	Unmeasured Water Miscellaneous Type H Charge
Unmeasured Services Band Z	£/ann um	-	UTZ	Unmeasured Services Band Z	D7251	Unmeasured Water Fixed Charge
Unmeasured Services Band Z	£/RV	-	UTZ	Unmeasured Services Band Z	D7252	Unmeasured Water RV Poundage
Unmeasured Services Band Z	RV	-	UTZ	Unmeasured Services Band Z	D7253	Unmeasured Water RV Threshold
Unmeasured Services Band Z	£/ann um	-	UTZ	Unmeasured Services Band Z	D7254	Unmeasured Water RV Maximum Charge

Unmeasured Services Band Z	£/ann um	-	UTZ	Unmeasured Services Band Z	D7255	Unmeasured Water RV Minimum Charge
Unmeasured Services Band Z	£/ann um	-	UTZ	Unmeasured Services Band Z	D7256	Unmeasured Water Miscellaneous Type A Charge
Unmeasured Services Band Z	£/ann um	-	UTZ	Unmeasured Services Band Z	D7257	Unmeasured Water Miscellaneous Type B Charge
Unmeasured Services Band Z	£/ann um	-	UTZ	Unmeasured Services Band Z	D7258	Unmeasured Water Miscellaneous Type C Charge
Unmeasured Services Band Z	£/ann um	-	UTZ	Unmeasured Services Band Z	D7259	Unmeasured Water Miscellaneous Type D Charge
Unmeasured Services Band Z	£/ann um	-	UTZ	Unmeasured Services Band Z	D7260	Unmeasured Water Miscellaneous Type E Charge
Unmeasured Services Band Z	£/ann um	-	UTZ	Unmeasured Services Band Z	D7261	Unmeasured Water Miscellaneous Type F Charge
Unmeasured Services Band Z	£/ann um	-	UTZ	Unmeasured Services Band Z	D7262	Unmeasured Water Miscellaneous Type G Charge
Unmeasured Services Band Z	£/ann um	-	UTZ	Unmeasured Services Band Z	D7263	Unmeasured Water Miscellaneous Type H Charge

Metered Non-Potable Water

Description	Unit	Charge	CMOS Tariff Code	CMOS Tariff Name	CMOS Charge Element	CMOS Charge Element Name
Metered Non-Potable Water Services Band A	£/ann m	On applicatio n	MNPBANDA	Metered Non-Potable Water Services Band A	D7152	Metered Non-Potable Water Supply Point Fixed Charges
Metered Non-Potable Water Services Band A	£/m3	On applicatio n	MNPBANDA	Metered Non-Potable Water Services Band A	D7153	Metered Non-Potable Water Block Tariff
Metered Non-Potable Water Services Band B	£/ann m	On applicatio n	MNPBANDB	Metered Non-Potable Water Services Band B	D7152	Metered Non-Potable Water Supply Point Fixed Charges

Metered Non-Potable Water Services Band B	£/m3	On application	MNPBANDB	Metered Non-Potable Water Services Band B	D7153	Metered Non-Potable Water Block Tariff
Metered Non-Potable Water Services Band C	£/annum	On application	MNPBANDC	Metered Non-Potable Water Services Band C	D7152	Metered Non-Potable Water Supply Point Fixed Charges
Metered Non-Potable Water Services Band C	£/m3	On application	MNPBANDC	Metered Non-Potable Water Services Band C	D7153	Metered Non-Potable Water Block Tariff
Metered Non-Potable Water Services Band D	£/annum	2,167.43	MNPBANDD	Metered Non-Potable Water Services Band D	D7152	Metered Non-Potable Water Supply Point Fixed Charges
Metered Non-Potable Water Services Band D	£/m3	1.2572	MNPBANDD	Metered Non-Potable Water Services Band D	D7153	Metered Non-Potable Water Block Tariff
Metered Non-Potable Water Services Band E	£/annum	44.82	MNPBANDE	Metered Non-Potable Water Services Band E	D7152	Metered Non-Potable Water Supply Point Fixed Charges
Metered Non-Potable Water Services Band E	£/m3	1.4187	MNPBANDE	Metered Non-Potable Water Services Band E	D7153	Metered Non-Potable Water Block Tariff
Metered Non-Potable Water Services Band F	£/annum	13.02	MNPBANDF	Metered Non-Potable Water Services Band F	D7152	Metered Non-Potable Water Supply Point Fixed Charges
Metered Non-Potable Water Services Band F	£/m3	1.4392	MNPBANDF	Metered Non-Potable Water Services Band F	D7153	Metered Non-Potable Water Block Tariff
Metered Non-Potable Water Services Band G2	£/annum	6.01	MNPBANDG2	Metered Non-Potable Water Services Band G2	D7152	Metered Non-Potable Water Supply Point Fixed Charges
Metered Non-Potable Water Services Band G2	£/m3	1.4579	MNPBANDG2	Metered Non-Potable Water Services Band G2	D7153	Metered Non-Potable Water Block Tariff
Metered Non-Potable Water Services Band G	£/annum	6.01	MNPBANDG	Metered Non-Potable Water Services Band G	D7152	Metered Non-Potable Water Supply Point Fixed Charges
Metered Non-Potable Water Services Band G	£/m3	1.4579	MNPBANDG	Metered Non-Potable Water Services Band G	D7153	Metered Non-Potable Water Block Tariff
Metered Non-Potable Water Services Band Z	£/annum	-	MNPBANDZ	Metered Non-Potable Water Services Band Z	D7152	Metered Non-Potable Water Supply Point Fixed Charges
Metered Non-Potable Water Services Band Z	£/m3	-	MNPBANDZ	Metered Non-Potable Water Services Band Z	D7153	Metered Non-Potable Water Block Tariff

Charges Applied When No Supply

	A: Fixed and vol charges	B: No charges apply	C: Volume charges only	D: Drainage charges only	E: Volume and drainage charges
Vacancy Charging Method Water		√			
Temporary Disconnection Charging Method Water		√			

